



CHRISTCHURCH STUDIO

CHRISTCHURCH | 2020



WELCOME TO

CHRISTCHURCH

STUDIO TO ALPS IN A DAY

Canterbury is renowned for its picturesque beauty, from coastline to alpine landscapes. At its heart sits **Christchurch**, New Zealand's newest and second largest commercial centre. **Film makers can access several film locations and terrain within a one - two hour drive from the studio.**

STUDIO TO ALPS IN A DAY



INTRODUCING



CHRISTCHURCH STUDIO

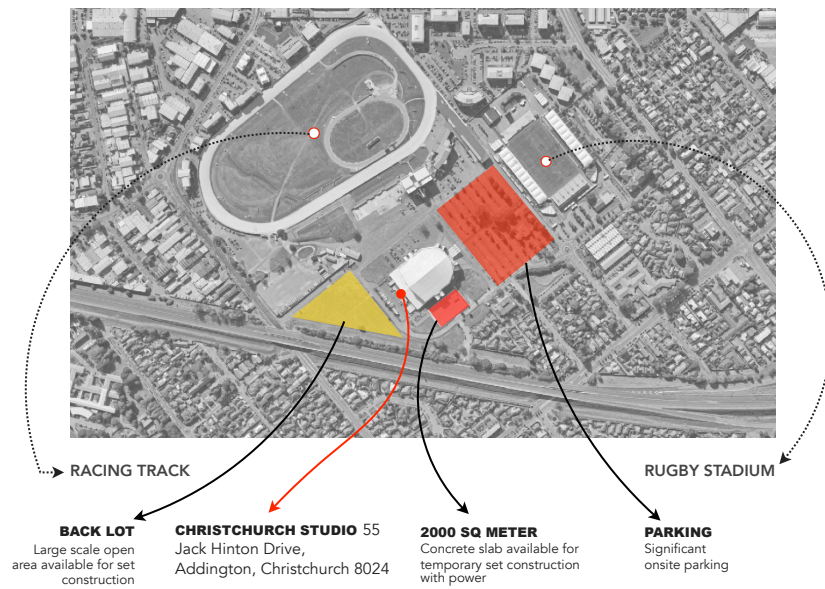
Christchurch now welcomes screen productions to the city by making Christchurch Arena available as a Studio Facility of 4000m² while permanent facilities are being developed. Christchurch Arena facilities consist of areas that can be converted into: dressing rooms, makeup, hair, wardrobe and canteen (full kitchen and catering facilities on site). There are over 20 suites and a 1725m² concourse that can be converted for production offices, technical, sound or edit suites. Outside can house temporary workshops and container storage areas.

In the precinct there is a racing track, rugby ground, commercial office park and large-scale car park that can accommodate both cars, containers, and trucks. The studio is 7 minutes from Christchurch City Centre and 15 minutes to Christchurch International Airport. Major arterial routes to a wide and diverse range of locations can be accessed easily from the site.

STUDIO LOCATION

EASILY ACCESSIBLE CITY LOCATION

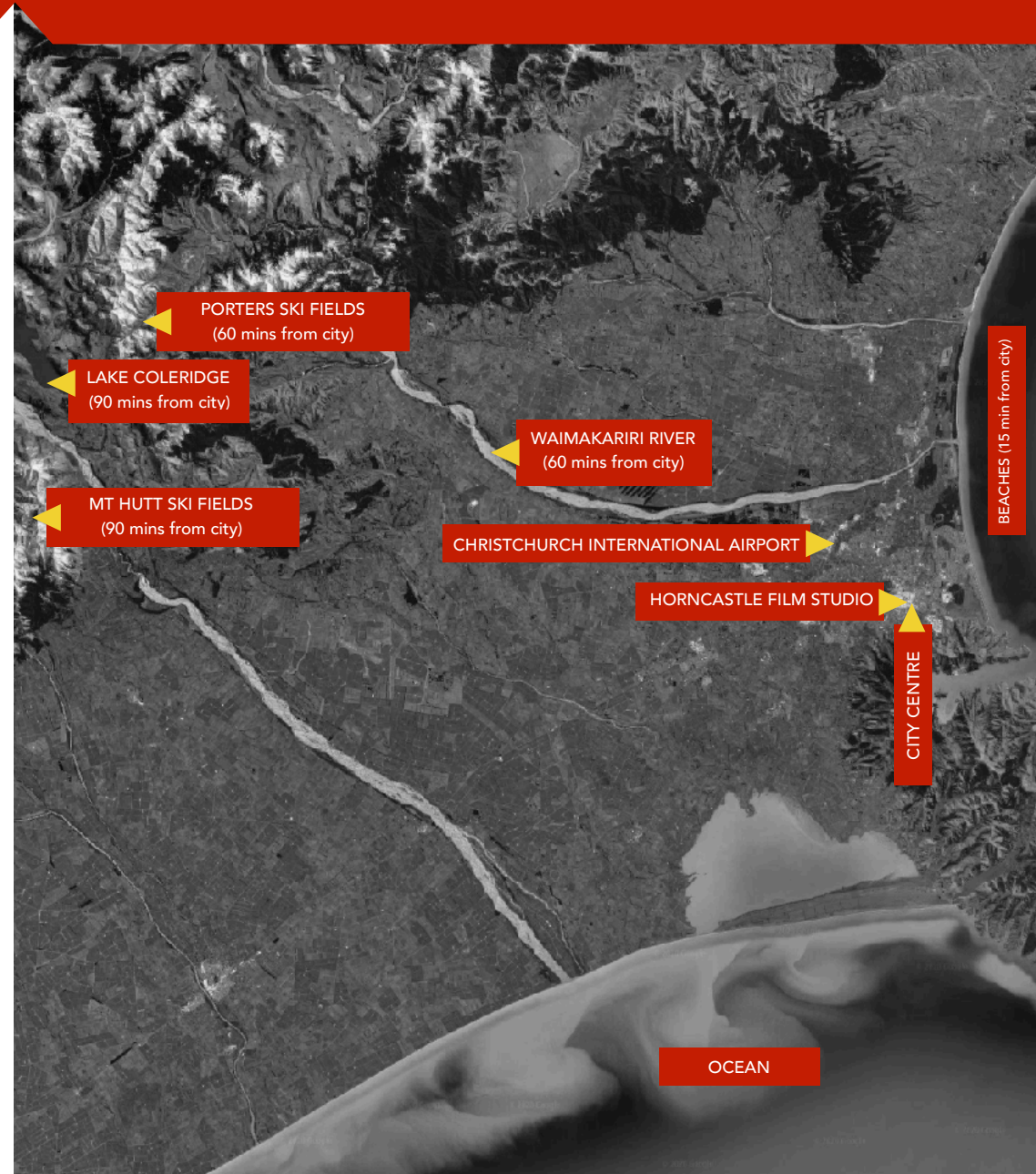
A snapshot of some of the accessible locations 10 - 90 minutes driving time of each other.



CHRISTCHURCH STUDIO

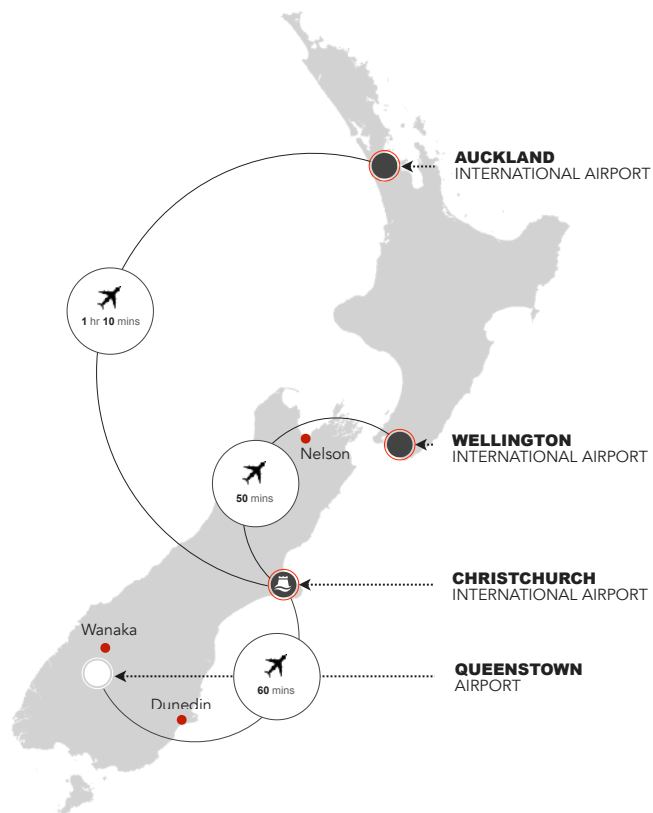
CHRISTCHURCH INTERNATIONAL AIRPORT

18 minutes | 9.5 kms



CHRISTCHURCH IS YOUR **GATEWAY** TO THE SOUTH ISLAND.

DOMESTIC CONNECTIVITY



	WANAKA	QUEENSTOWN	DUNEDIN	NELSON
CHRISTCHURCH	5 HRS	6 HRS	5 HRS	6 HRS

INTERNATIONAL CONNECTIVITY [PRE COVID DATA]

Christchurch International Airport is New Zealand's second largest airport providing a major hub and strategic connection to the world's film & television markets.

The new integrated terminal offers a first class Airport experience with large passenger lounges, extra seating, improved passenger flows and enhanced retail and café areas.

Further connections through Auckland International airport are readily available, with frequent daily services and just over a one hour flight time.

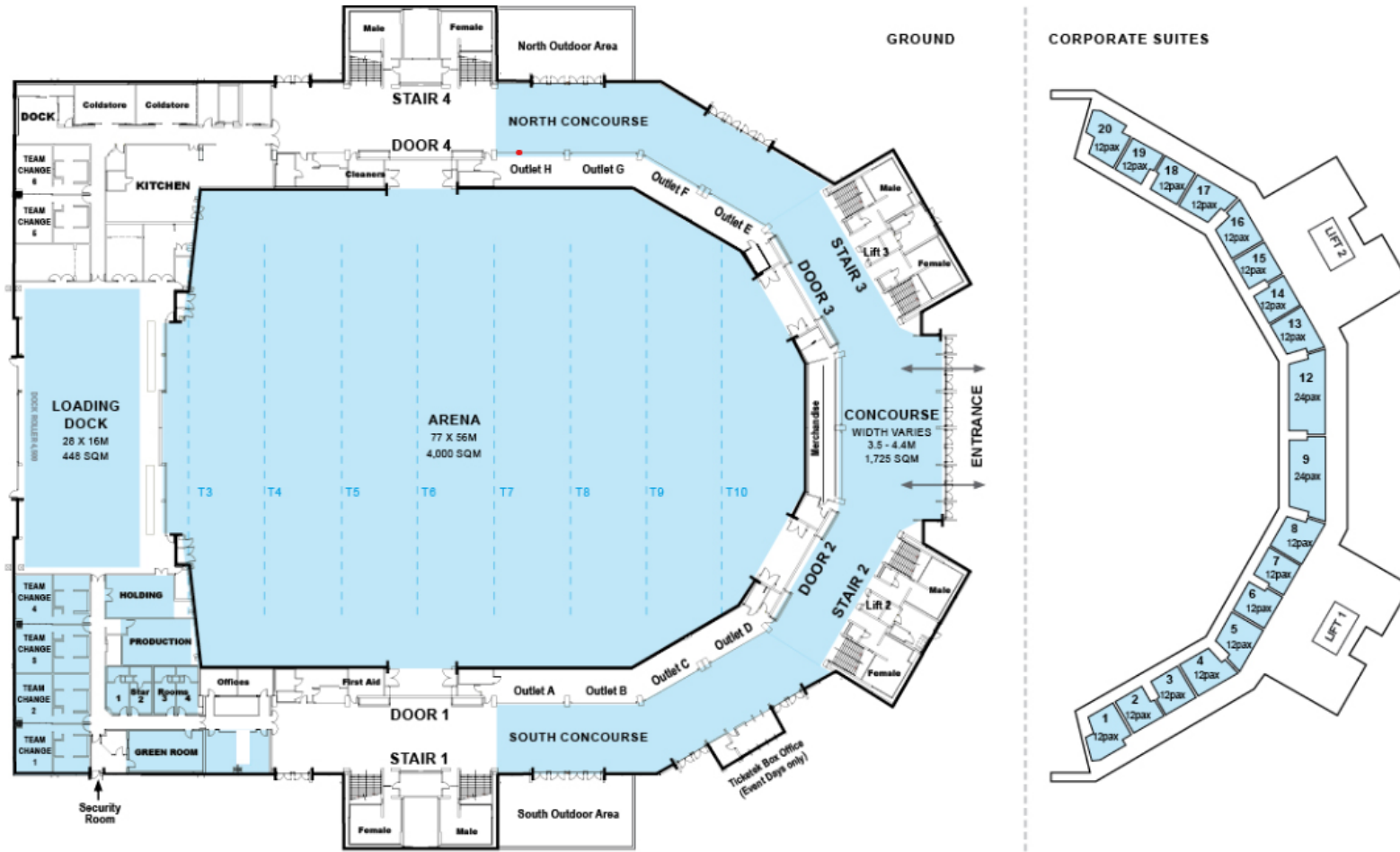
Christchurch Airport is located just ten kilometres from the heart of Christchurch's CBD. This journey is an easy 15 minute drive. Taxi companies, hire cars and shuttle services are all regularly available to transport you to your accommodation.

- 10** INTERNATIONAL AIRLINES **FLY DIRECT TO CHRISTCHURCH** FROM 12 DIFFERENT LOCATIONS **ACROSS THE WORLD**
- 115** WEEKLY FLIGHTS **CONNECTING CHRISTCHURCH TO THE WORLD**

AIRLINES FLYING INTO CHRISTCHURCH



CHRISTCHURCH STUDIO AREA & CAPACITY



MAIN AREA 4000m² | CONCOURSE 1725m² | BACK OF HOUSE 655m² | CORPORATE SUITES 16-38



TECHNICAL DATA

A WORLD CLASS ARENA WITH THE HEART OF A STUDIO!

USABLE FLOOR AREA	Studio 4,000m ² / 43,055 ft ² Concourse 1,725m ² / 18,567 ft ² BOH 655m ² / 7,050 ft ²
CAPACITY	8,888 maximum usable seats – variable capacities and seating modes
DIMENSIONS	<ul style="list-style-type: none"> • Studio 58.7m x 78.5m clear floor • Concourse variable 3.5m ~ 4.4m
FLOOR LOADINGS	<p>Studio Back of House</p> <ul style="list-style-type: none"> • Forklift Load Capacity – 3 tonne/dual tyred 5 tonne • 30kPA (630lbs/in) UDL • Maximum axle load 120Kn (11.8 tonnes) Per Axle <p>Concourse</p> <ul style="list-style-type: none"> • 5Kpa /105lbs/in
SURFACES	<p>Poured Paddle Floated finish and sealed hardened concrete</p> <ul style="list-style-type: none"> • Studio and BOH entrance into arena 175cm / 7” thick • Back of House Concourse 125cm / 5” thick
AIRCONDITIONING	Full automatic programmed to Arena & BOH
ACCESS / DOORS	<ul style="list-style-type: none"> • Grade Level <ul style="list-style-type: none"> ◦ One main entrance ◦ Seven exits door sets ◦ Two passenger lifts to Cross aisle & Corporate Level • Studio access from compound through BOH • Vehicle Door Dimensions 4.5m high x 8m wide / 14’10” h x 26’4” w • 2.5 tonne forklift available – cost applies

DISABLED ACCESS	<p>37 sealed disabled car parks adjacent to the front entrance of the venue</p> <p>Venue is ground level with no steps for entry</p> <p>Passenger Lifts x 2 900kg Max to Accessible areas</p>
CLEARANCES	<ul style="list-style-type: none"> • Clearance to the Studio roof trusses varies from 14m / 45.9’ at the perimeters of the Studio Floor to 22m / 72.1’ in the middle. • BOH 8m / 26.2’ • Concourse variable 3.5m ~ 4.4m
HOUSE LIGHTING	<ul style="list-style-type: none"> • Dimmable zoned 100/500-watt halogen flood lights – or high bay metal halide work light 400/280 watt • Metal Halide Sports Fittings (1500 watt) for telecasts (700 lux vertical and 1500 lux horizontal) are provided • The Studio is equipped with two medium throw and two long throw 1200 watt Lycian Follow spots – costs apply • Additional production fittings available to suit requirements – costs apply • 60 Channels of 2.5kw Dimmers • DMX 512 Control, House Lighting control and Production Intercoms facility is standard
DASHER BOARDS	<p>Crystaplex 950 series 1.4m high boards (4’ 8”)</p> <p>Olympic size 60m x 30m (197’ x 98’) enclosure</p>

DATA CAPABLE	A service trench runs around the Studio for cableway. Cat 5 phone/data lines, XLR Audio, Co-axial Video & Ceep multipin waylines are reticulated throughout the venue
STAGING	Sico Roll n' Set Maximum Size – 12.2m x 19.5m = 237.9m ² / 40' x 64' = 2560ft ² In decks of 2.4m x 1.2m / 7'11" x 3'11" Adjustable height 1.22m to 1.83m / 48" to 72"
FIRE PROTECTION	Facility is fitted with smoke detection and sprinkler systems Manual call points for Fire Alarm
HOUSE SOUND	The Studio is sound proof as per industry standards The Studio incorporates a quality sound system integrated to the Studio's acoustics and geometry designed to minimize sound break-out. Basic House Sound consists of Community Distributed boxes at Catwalk level and under box fill, controlled by 12 or 24 channel Mixing Desks. A full concourse and Backstage paging network. Further information can be found in the Venue Service Guide. Additional audio equipment available – costs apply
TOILETS	Men's/Women's facilities available at each gate
SMOKE ISOLATION (COSTS APPLY)	Additional information available on request
STANDARD EQUIPMENT	Standard equipment (staging, drapery, mother grid position, technical support, furniture, movable/loose seating & sporting equipment) inclusions are indicated by contract

GANTRY SPECIFICATIONS	<ul style="list-style-type: none"> • 18T (including 4.5T self weight) load capacity before needing to introduce dead hangs. • Dimensions 24.7 m x 18.6 m. • Dead hangs can be hung spanning between 3 of the roof trusses at once. • The gantry can be moved. • Assistance with truss designs/hangs are available to achieve coverage of the floor. • Main catwalks are existing with additional catwalks between these along Trusses 4 – 8 with a load capacity 250kg/sq m.
PACK-IN & PACK-OUT EQUIPMENT (COSTS APPLY)	<ul style="list-style-type: none"> • Emergency Backup Generator connection points (for essential services) • Electric 2.5 tonne forklift and other access equipment can be made available for hire • General purpose trolleys, pallet lifters
SPECIAL FEATURES	<ul style="list-style-type: none"> • High level rigging steel • Follow spot platform and crossover catwalks • 18 Production suites
DRESSING ROOMS	<p>Star Dressing Rooms 1 – 4</p> <ul style="list-style-type: none"> • All located on ground level, back of house, stage right • Dressing area 2.7m x 3.7m = 10m² / 8'11" x 12'4" = 108ft² Toilet Area 2.7m x 1.8m = 4.86m² / 8'11" x 5'11" = 52.5ft² <p>Changing Rooms</p> <ul style="list-style-type: none"> • Six team changing rooms are located on the ground floor back of house, stage right • There are folding walls between rooms 1 & 2, 3 & 4, 5 & 6 • Dressing area (includes 15 lockers/seats) 4.5m x 6m = 27m² / 14'10" x 19'8" = 291.6ft² • Toilet/Shower Area. 4.5m x 4.5m = 20.25m² / 14'10" x 1'10" = 219ft² <ul style="list-style-type: none"> ◦ 2 toilet stalls and 3 shower heads, including one each for disabled persons

POWER AVAILABILITY

Production Power Switchboards

- One right, one left, each 1 x 1000A, 400V, 50 Hz, 3ph supply

Supplying 5 LEGS

- 1 x 800A, 400V, 50Hz, 3ph outgoing Combination fuse switch
- 1 x 400A, 400V, 50Hz, 3ph outgoing Combination fuse switch
- 1 x 200A, 400V, 50Hz, 3ph outgoing Combination fuse switch
- 1 x 63A, 400V, 50Hz, 3ph outgoing Combination fuse switch
- 1 x 50A, 400V, 50Hz, 3ph outgoing Combination fuse switch

Audio Power

- Interrupted during emergency for P.A. muting
- Technical Earth for P.A.

Floor Outlet Ports (each)

- 1 x 32A, 400V, 50Hz, 3ph outgoing switched socket outlet
- 2 x 10A, 240V, 50Hz, 1ph outgoing switched socket outlet (RCD protected)

Roof & Catwalks

- Production Power Switchboard
- 4 x 200A, 400V, 50Hz, 3ph

Supplying

- 1 x 63A, 400V, 50Hz, 3ph outgoing switched socket outlet
- 1 x 24 pole, 3ph chassis complete with 12 x 20A, 1ph circuit breakers
- 1 x 20A & 1 x 30A 3ph circuit breakers
- Distributed single phase outlets

Vomitory Entries

- 4 x Event Power Switchboards, each providing 1 x 350A, 400V, 50Hz, 3ph supply

Supplying

- 8 x 63A, 400V, 50Hz, 3ph outgoing switched socket outlet
- 4 x 250A, 400V, 50Hz, 3ph outgoing combination fuse switch
- 8 x 100A, 400V, 50Hz, 3ph outgoing fuse bases and power to the floor outlets
- 1 x 32A, 400V, 50Hz, 3ph outgoing switched socket outlet. 2 x 10A, 240V, 50Hz, 1ph outgoing switched socket outlet (RCD protected)



STABLE WEATHER

Compared to other major centres in New Zealand, Christchurch is known for its dry, stable and temperate weather.

CHRISTCHURCH

DRY. STABLE. TEMPERATE.



AVERAGE WINTER
12°C



AVERAGE SUMMER
22°C



AVERAGE ANNUAL RAINFALL
648 MM

ANNUAL SUNSHINE HRS
2143 HRS

AUCKLAND

AVERAGE SUMMER: 23°C
AVERAGE WINTER: 14°C
ANNUAL SUNSHINE HRS: 2060 HRS
AVERAGE RAINFALL: 1240 MM

WELLINGTON

AVERAGE SUMMER: 20°C
AVERAGE WINTER: 9°C
ANNUAL SUNSHINE HRS: 2025 HRS
AVERAGE RAINFALL: 1249 MM

HEART OF CANTERBURY

Christchurch has achieved international acclaim for its creative and clever urban design, evidenced by inspiring street art, new architecture, and a range of new retail, hospitality, innovation, arts and entertainment precincts.

Within an hour from the city, productions can be filming at a sea port, wheat fields, alpine environments, on braided rivers, surf breaks, rolling hills, farm plains, lakes, geographic rock, historic buildings, English gardens, sleepy little town centres, sheltered bays and so much more.

Christchurch is the perfect destination within New Zealand to deliver on large-scale media productions.



One hour from **CHRISTCHURCH** city & international airport

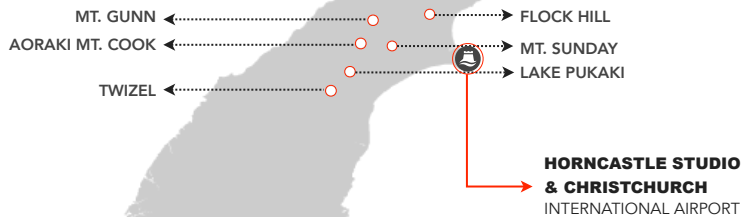


NEW ZEALAND'S MOST **CONVENIENT** FILMING DESTINATION

CANTERBURY HAS **DELIVERED** FOR LARGE SCALE PRODUCTIONS

EASILY ACCESSIBLE LOCATIONS

A snapshot of some of the most scenic and diverse landscapes within 4 hours driving time of each other.



CHRISTCHURCH	FLOCK HILL	MT. SUNDAY	LAKE PUKAKI	TWIZEL	MT. COOK	MT. GUNN
	1 HR	2.5 HRS	3 HRS	3.5 HRS	4 HRS	3 HRS



Twizel's alpine magic was captured on-film in both *The Hobbit: An Unexpected Journey* and *The Lord of the Rings Trilogy*. Part of the Warg chase was filmed here; and the largest battle scene ever, the Battle of the Pelennor Fields.



Mt. Cook and its surrounding alpine peaks are used in the backdrop of some of the aerial filming in *The Hobbit: An Unexpected Journey*.



Stunning Lake Pukaki was chosen as the location for Lake Town in *The Hobbit: The Desolation of Smaug*. Braemar Station at Lake Pukaki was used in *The Hobbit: An Unexpected Journey* to portray epic scenic shots, the 'Warg Chase' and approach to Rivendell. It was transformed into the utopian planet Uriel in a *Wrinkle in Time*.



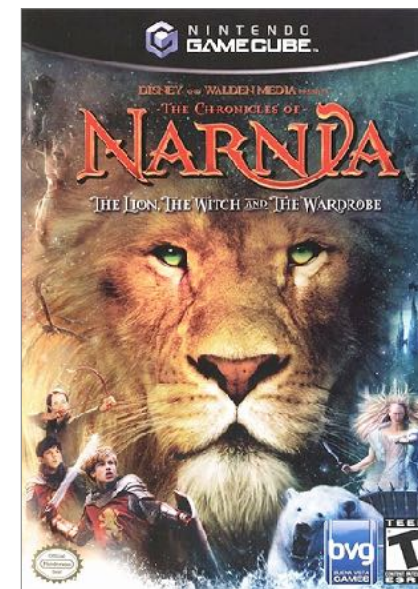
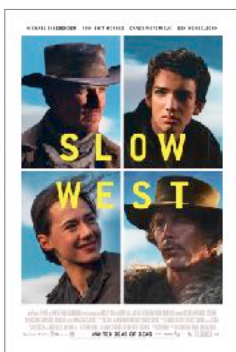
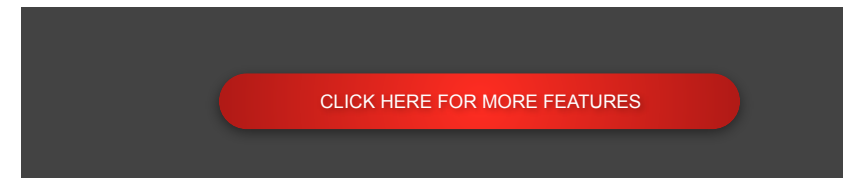
This stunning location in Canterbury is the backdrop for Edoras, the capital of Rohan. You can easily picture where the Edoras set was on top of Mt. Sunday in *The Lord of the Rings Trilogy*.



The Chronicles of Narnia, high in the Southern Alps of the South Island is an area of tortured rocks and dramatic valleys known as Flock Hill. It was here that director Adamson created the scenes for the great battle for Narnia.



Mt. Gunn on the West Coast was one of the stunning locations where the beacons were lit between Gondor and Rohan in *Lord of the Rings Trilogy*.



CHRISTCHURCH ACCOMMODATION

THERE ARE 100'S OF ACCOMMODATION OPTIONS TO SUIT A VARIETY OF BUDGETS IN CHRISTCHURCH



5 STAR HOTELS



2-4 STAR HOTELS



MOTELS



RESORTS



BED & BREAKFASTS



AIR B&B



CAMPERVANS



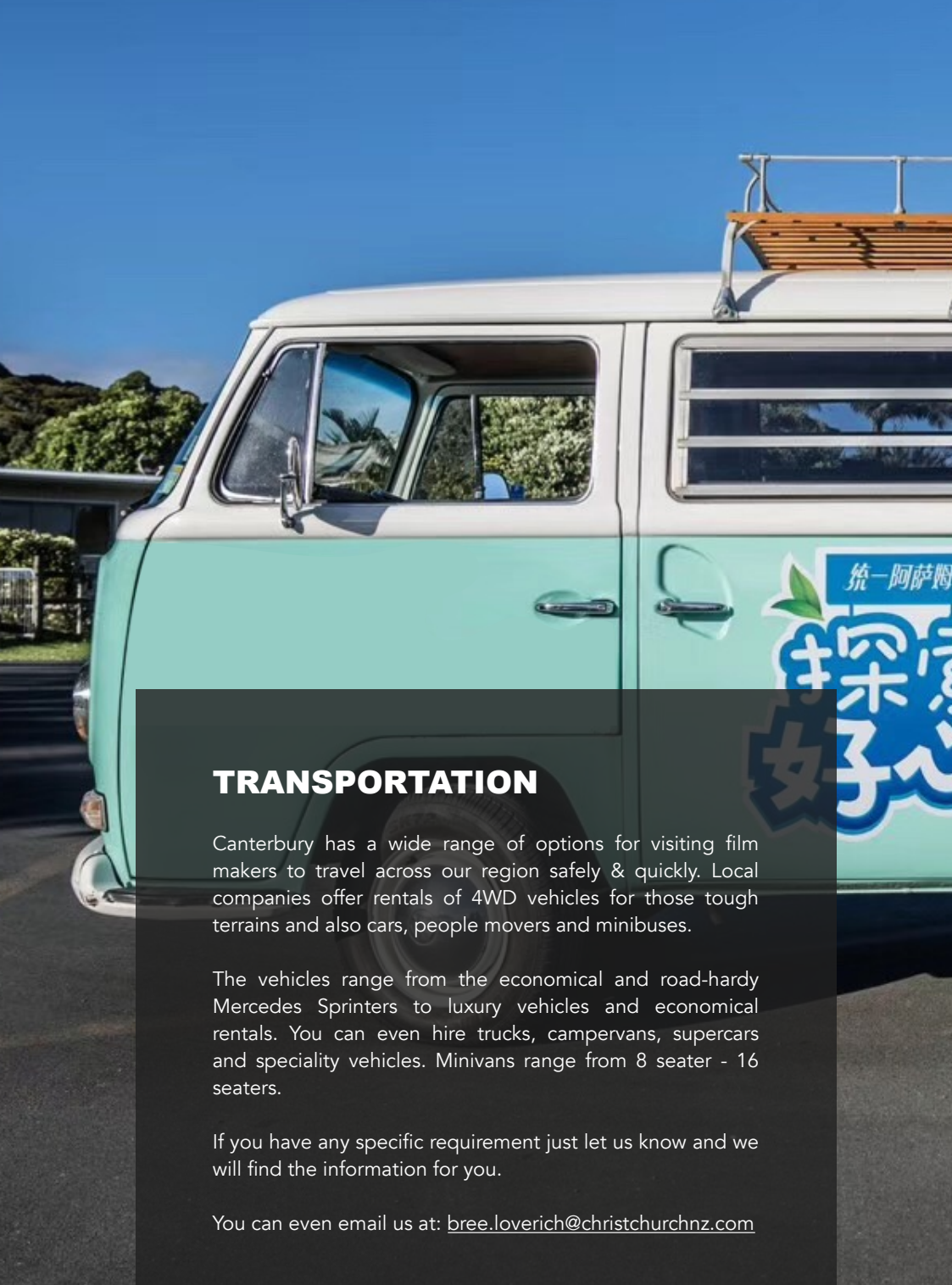
CAMPGROUNDS



NEW ZEALAND SCREEN INCENTIVES

[CLICK HERE FOR MORE INFORMATION](#)

The New Zealand Screen Production Grant encourages medium to large budget productions, both from New Zealand and overseas, to locate here. International productions are eligible for a cash grant of 20% of Qualifying New Zealand Production Expenditure (QNZPE), with a 5% uplift available for a smaller number of productions that are invited to apply and can demonstrate significant additional economic benefit to New Zealand. PDV productions can access a grant of 20% of QNZPE up to QNZPE of \$25 million, and 18% of QNZPE for QNZPE above \$25 million. [more info...](#)



TRANSPORTATION

Canterbury has a wide range of options for visiting film makers to travel across our region safely & quickly. Local companies offer rentals of 4WD vehicles for those tough terrains and also cars, people movers and minibuses.

The vehicles range from the economical and road-hardy Mercedes Sprinters to luxury vehicles and economical rentals. You can even hire trucks, campervans, supercars and speciality vehicles. Minivans range from 8 seater - 16 seaters.

If you have any specific requirement just let us know and we will find the information for you.

You can even email us at: bree.loverich@christchurchnz.com

VEHICLES YOU CAN RENT FROM **CANTERBURY** 2 SEATER HELICOPTERS - 16 SEATER MINI VANS



A HUGE RANGE OF VEHICLES ARE AVAILABLE FOR
SHORT TERM & LONG TERM RENTAL

A photograph of a film set. In the foreground, a camera operator is seen from behind, wearing a dark jacket and operating a professional video camera. The camera is pointed towards a woman in the background. She has long, dark, wavy hair and is wearing a blue jacket and dark pants. She is looking towards the camera operator. The background is a dimly lit indoor space with large windows and some plants. The overall atmosphere is professional and focused.

CREW & CAST

New Zealand has a large number of actors, models, presenters and other professional personnel. As an immigrant country, New Zealand's population is made up of people of all colours and races, from east Asia, central Asia, southeast Asia, the Middle East, Europe, America, South America and Africa, so we can easily find a variety of facial features and actors who can speak different languages.



CREW

The Lord of the Rings, The Chronicles of Narnia, Mulan, Mission Impossible and many other large-scale film and television works completed in New Zealand have created a rich crew resource. The region has access to some of the best crew in the world from Gaffers to Grip and Directors to Producers.



CREW AVAILABLE IN NEW ZEALAND / CANTERBURY

- Directors
- 1st Assistant Directors
- 2nd Assistant Directors
- 3rd Assistant Directors
- Continuity Supervisor
- Producers
- Line Producers
- Production Managers
- Production Coordinators
- Production Assistants
- Production Researchers
- Production Runners
- Production Drivers
- Location Scouts
- Location Managers
- Location Assistants
- Casting Directors & Coordinators
- Production Designers
- Art Directors
- Art Coordinators
- Art Department Assistants
- Props Buyers
- Food Stylists
- Set Dressers
- Animal Trainers
- Director of Photography
- Camera Operators
- 1st Assistant Camera
- 2nd Assistant Camera
- Digital Split/Video Assist Operators
- Steadicam Operators
- Drone Operators
- Data Wranglers
- Gaffers
- Electricians
- Best Boys
- Generator operators
- Grip/Gaffer Combo
- Key Grips
- Grip Assistants
- Costume Supervisors
- Costume Assistants
- Makeup Supervisor
- Make Up Assistants
- Makeup/Wardrobe Combo
- Special Effects Makeup
- Hairdressers
- Sound Recordists
- Boom Operators
- Unit Assistants
- Unit Managers
- Catering
- Safety Officer
- Swing Drivers
- Post Production Supervisors
- Post Production Editors

YOU CAN ALSO VISIT:

[DATA BOOK NZ](#)

[CREW LIST NZ](#)





CHRISTCHURCH TALENT : **A SNAPSHOT OF ACTORS & MODELS AVAILABLE**





CHRISTCHURCH STUDIO

CONTACT

SCREEN CANTERBURYNZ



BREE LOVERICH | Screen Office Manager

Phone: +64 3 379 5575 | **Mobile:** +64 27 348 8841

Email: bree.loverich@christchurchnz.com

SCREEN CANTERBURYNZ: BNZ Centre, Level 3,
101 Cashel Street, Christchurch 8011.